

# Wissmach LUMINESCENT

All of our colors are available with our Luminescent coating. You can achieve different effects when firing with the coated side up or down. It is ideal for reversed fusing projects and sculptures which you want to look their best from both sides.

Like with any glass, you have to see it in person. Photos can not show you how beautiful the light reflects the luminescent colors.

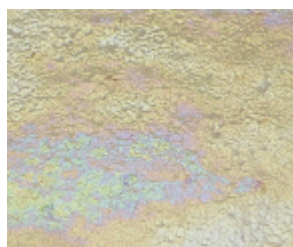


Landscape in Luminous Glass by Petra Kaiser

Here are just a few **sample tiles** to give you an idea of the color. All tiles were fused luminescent side towards the kiln shelf.



90-04-LU Light Blue



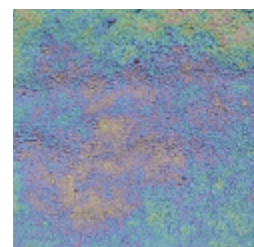
90-06-LU Champagne



90-11-LU Bright Green



90-05-LU Light Green



90-02-LU Black



*Wall Vase fired in the Reversed Fusing Technique with 96-06 and 96-18 luminescent*

Our coated glass is similar to the iridescent coatings, but not quite the same. Therefore, we call it luminescent coating. It does create different effects depending on the way you fire it.

#### You can fire Luminescent Glass:

- Coated side down onto a kiln wash dusted fiber shelf and the coating will intensify.
- Coated side down onto a kiln washed shelf or shelf paper and it will still look intense but different.
- Coated side up and the luminescent coating will stay on darker colors if you fire no higher than 1410 °F, but will fade away on lighter colors giving the glass a beautiful sheen.
- Cover the coated side with a piece of clear and the coating will fade away completely.

Working with all these options will offer you a nice new pallet of design possibilities. Petra Kaiser has been fusing with the luminescent coated glass for several years and her customers and students like working with it as well. You can find some interesting free project lessons at [www.kaiserlee.com](http://www.kaiserlee.com) and on our News/Blog site at [www.wissmachglass.com](http://www.wissmachglass.com).