



LOBBY OF A PRIVATE BUILDING  
LYON - FRANCE  
SGG ART GLASS™ BARIO MIRRORÉ & LAMINÉ

## Clear Antiques

“Architectural Art Glass” for landmark restorations, elegant new homes, high end construction, and spectacular décor.

Colonial (COL) & Versailles (VER) are considered restoration styles. These blown glasses are exceptionally transparent due to the quality of sand used in the “batch”. It has been used for glazing in elegant houses since the 19th century, and is now used to reproduce and restore old windows and furniture. Sheets may appear wavy, have marks, seeds or variation in thickness, adding to the authentic appearance.



SJ-1-COL  
Colonial - Plain with few Seeds  
A



SJ-1-VER  
Versailles - Plain with few Seeds  
B



SJ-1-RM  
Antique Reamy  
D



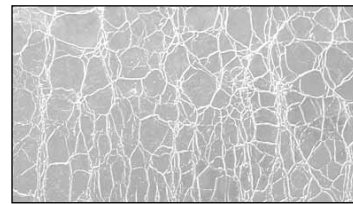
SJ-1-CORD  
Cordele - Light Reamy with few Seeds  
CC



SJ-MA1  
Clear Antique  
B



SJ-1-3XX  
Antique - Heavy Seedy  
D



SJ-1-CQ  
Antique Craquele  
C

# Flashed Antique

# VERRERIE DE SAINT-JUST



## White Flashed on Color

Opal flash gives a slight opacity to the blown antique colors, giving it more versatility.



SJ-01-OFL  
White Flashed  
on Clear  
F



SJ-02-OFL  
White Flashed  
on Lt. Amber  
F



SJ-04-OFL  
White Flashed  
on Gold  
F



SJ-05-OFL  
White Flashed  
on Moss Green  
F



SJ-09-OFL  
White Flashed  
on Aqua Green  
F



SJ-11-OFL  
White Flashed  
on Periwinkle  
F



SJ-14-OFL  
White Flashed  
on Lt. Rose  
F



SJ-16-OFL  
White Flashed  
on Dk. Rose  
F



SJ-17-OFL  
White Flashed  
on Grey Olive  
F



SJ-19-OFL  
White Flashed  
on Taupe Tan  
F

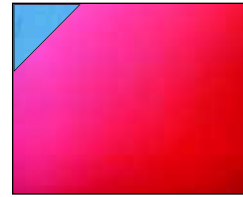


SJ-181-OFL  
White Flashed  
on Red  
F



SJ-211-OFL  
Dense White Flashed  
on Clear  
F

## Color Flashed on Color



SJ-206-FL  
Red Flashed  
on Blue Antique  
F



SJ-208-FL  
Blue Flashed  
on Yellow Antique  
F

## Color Flashed on Clear



SJ-5-FL  
Red Flashed on  
Clear Antique  
E



SJ-15-FL  
Blue Flashed on  
Clear Antique  
E



SJ-212-FL  
Green Flashed on  
Clear Antique  
E



SJ-213-FL  
Dk. Teal Green Flashed  
on Clear Antique  
E



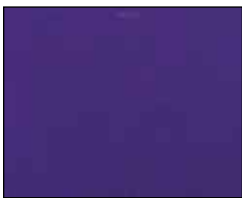
SJ-217-FL  
Root Beer Brown Flashed  
on Clear Antique  
E



SJ-223-FL  
Gold Pink Flashed on  
Clear Antique K



SJ-225-FL  
Purple Violet Flashed  
on Clear Antique  
E



SJ-226-FL  
Grape Violet Flashed  
on Clear Antique  
E



SJ-BLACK-FL  
Black Flashed on  
Clear Antique  
G



St. Just Flashed Antiques

Stained Glass Artist, Massabuau-Jouve



## Antique Reamy



SJ-1-RM  
Clear Reamy  
D



SJ-9-RM  
Aqua Reamy  
D



SJ-13-RM  
Rose Reamy  
D



SJ-14-RM  
Pale Rose Reamy  
D

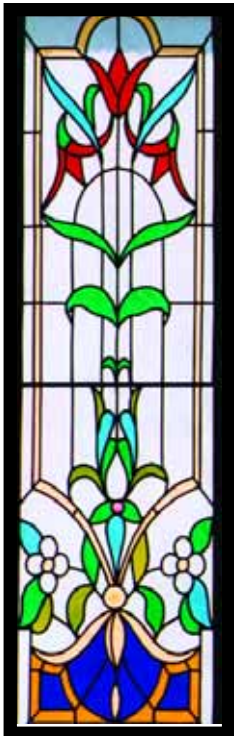


SJ-1472-RM  
Pale Blue Reamy  
D



SJ-5284-RM  
Mist Green Reamy  
D

## Antique Craquele



Stained Glass Artist, Guy Besson



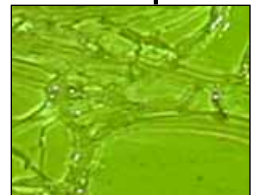
SJ-1-CQ  
Clear Craquele  
C



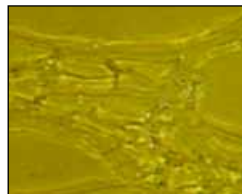
SJ-3-CQ  
Pale Amber Craquele  
C



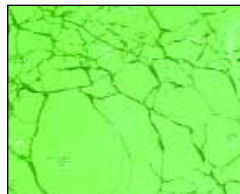
SJ-4-CQ  
Golden Amber Craquele  
C



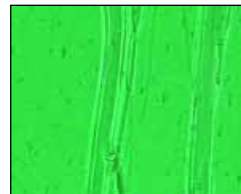
SJ-5-CQ  
Moss Green Craquele  
C



SJ-6-CQ  
Lt. Bronze Craquele  
C



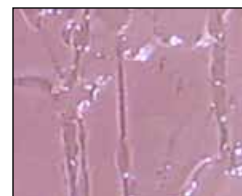
SJ-7-CQ  
Mint Green Craquele  
C



SJ-9-CQ  
Aqua Craquele  
C



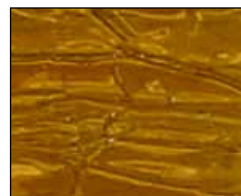
SJ-11-CQ  
Soft Blue Craquele  
C



SJ-14-CQ  
Pale Rose Craquele  
C



SJ-17-CQ  
Silver Grey Craquele  
C



SJ-19-CQ  
Taupe Craquele  
C



SJ-180-CQ  
Red Craquele  
E



## Blown Antique



SJ-MA-5  
Pale Lily Green Antique  
B



SJ-MA-6  
Sautern Amber Antique  
B



SJ-MA-7  
Fern Green Antique  
B



SJ-MA-9  
Aqua Antique  
B



SJ-MA-11  
Heather Blue Antique  
B



SJ-MA-12  
Cornflower Blue Antique  
B



SJ-MA-13  
Pale Buff Beige Antique  
B



SJ-MA-15  
Mauve Antique  
B



SJ-MA-16  
Rose Clover Antique  
B



SJ-MA-17  
Grey-Green Antique  
B



SJ-MA-18  
Willow Green Antique  
B



SJ-MA-19  
Warm Taupe Antique  
B



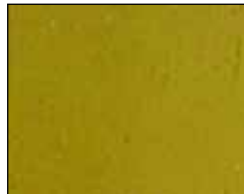
SJ-MA-21  
Mouse Grey Antique  
B



SJ-STD-015  
Mossstone Green Antique  
B



SJ-STD-018  
Garden Green Antique  
B



SJ-STD-025  
Lt. Taupe Antique  
B



SJ-STD-111  
Seaport Blue Antique  
C



SJ-STD-117  
Pearl Blue Antique  
C



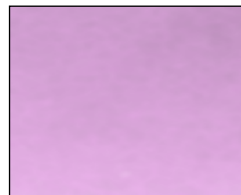
SJ-STD-131  
Misty Violet Anitque  
D



SJ-STD-152  
Cadet Grey Antique  
D



SJ-STD-180  
Dk. Red Antique  
E

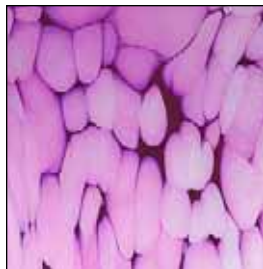


SJ-STD-X205  
Pale Rose-Purple  
B

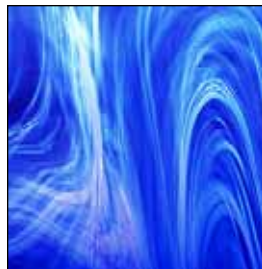


# Antique Bariolés

St. Just Antique Bariolés



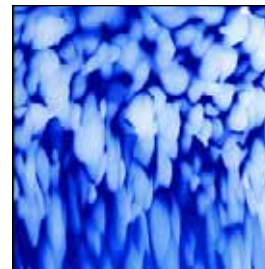
SJ-BAR-002  
Soft Peach-Pink  
w/Puffs of White  
J



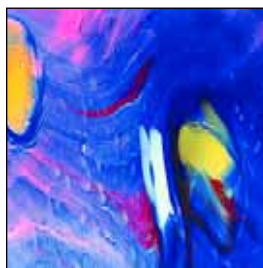
SJ-BAR-004  
Dk. Blue w/Swirls  
G



SJ-BAR-008  
Peach-Pink, Lt. Blue,  
White w/Brown Streaks  
H



SJ-BAR-009  
Blue w/Puffs of White  
G



SJ-BAR-015  
Blue w/Patches of Red  
and Yellow  
G



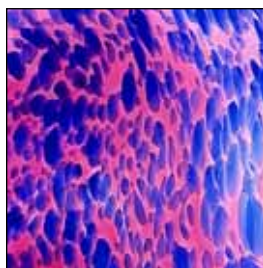
SJ-BAR-017  
White and Yellow  
H



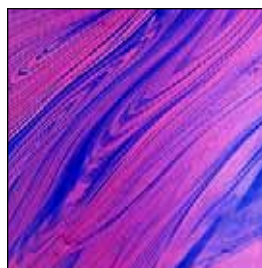
SJ-BAR-018  
White Streaks on Clear  
H



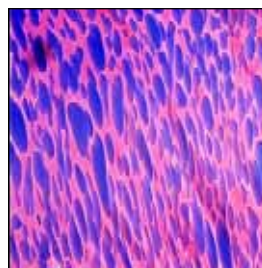
SJ-BAR-022  
Clear w/Puffs of White  
H



SJ-BAR-031  
Pink w/Blue Puffs and  
Wash of White  
J



SJ-BAR-033  
Pink w/Swirls of Blue  
J



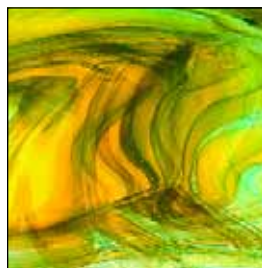
SJ-BAR-034  
Gold Pink w/Blue Frit  
Streaks  
J



SJ-BAR-038  
Yellow Streaks on Clear  
G



SJ-BAR-050  
Pink w/Blue Streaks and  
Yellow Puffs  
H



SJ-BAR-052  
Yellow and Teal Swirls  
J



SJ-BAR-056  
White w/Blue Streaking  
H

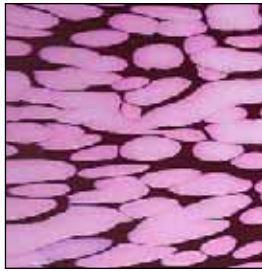


SJ-BAR-057  
Black w/Puffs of White  
J

Antique Bariolés



St. Just Antique Bariolés



SJ-BAR-011  
Gold Pink w/Puffs of White  
J



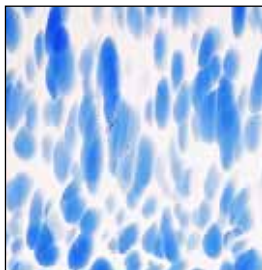
SJ-BAR-012  
Peach-Pink w/Streaks  
of White  
J



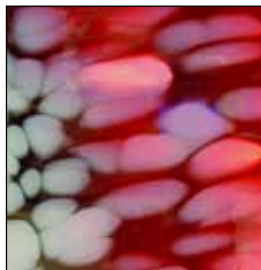
SJ-BAR-013  
Streaks of Green, Yellow,  
Red and White  
H



SJ-BAR-014  
Clear, Red w/Dark Swirls  
H



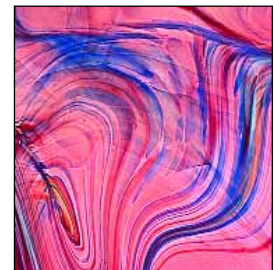
SJ-BAR-025  
Clear w/Blue Puffs  
H



SJ-BAR-026  
Red with White Puffs  
J



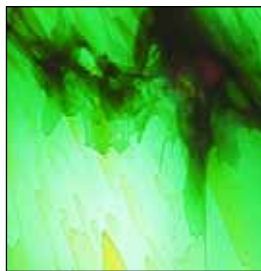
SJ-BAR-029  
Pink w/Blue Streaks and  
Puffs of White  
J



SJ-BAR-030  
Lt. Pink w/Swirls of White,  
Blue and Brown  
J



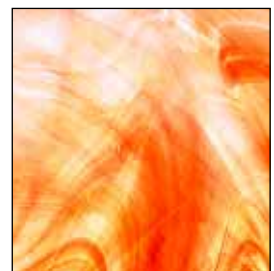
SJ-BAR-041  
Red, Blue  
H



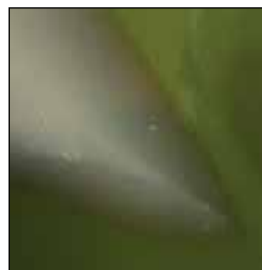
SJ-BAR-042  
Green w/Yellow Swirls  
H



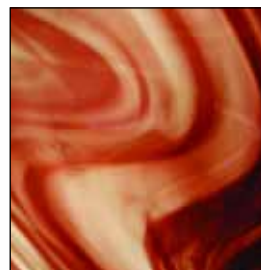
SJ-BAR-044  
Dk. Blue Streaks  
G



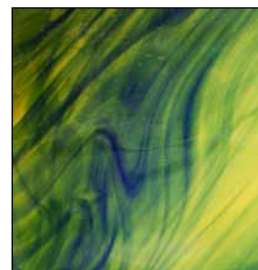
SJ-BAR-048  
Clear w/Orange Streaks  
G



SJ-BAR-058  
White on Dk. Grey  
J



SJ-BAR-231  
Red Streaky  
G



SJ-BAR-235  
Yellow w/Blue Swirls  
H

