

# FLOAT FIRE 82®

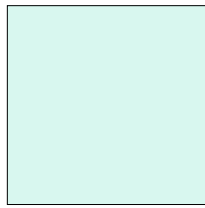
By Armstrong Glass Company

A fusible line of colored glass compatible with float glass

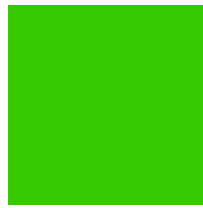
Float Fire 82®



F-600-LG C  
F-600-SM C  
Metallic Silver



F-601-LG A  
F-601-SM A  
White



F-602-LG A  
F-602-SM A  
Moss Green



F-603-LG A  
F-603-SM A  
Teal



F-604-LG A  
F-604-SM A  
Black



F-605-LG A  
F-605-SM A  
Yellow



F-606-LG A  
F-606-SM A  
Orange



F-607-LG A  
F-607-SM A  
Red-Orange



F-608-LG D  
F-608-SM D  
Rosewood



F-609-LG A  
F-609-SM A  
Dark Red



F-610-LG A  
F-610-SM A  
Grey



F-611-LG C  
F-611-SM C  
Metallic Gold



F-612-LG A  
F-612-SM A  
Olive Green



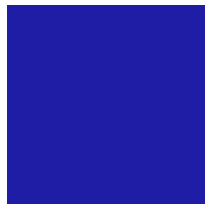
F-613-LG A  
F-613-SM A  
Caramel



F-614-LG A  
F-614-SM A  
Pink Champagne



F-615-LG D  
F-615-SM D  
Purple



F-616-LG D  
F-616-SM D  
Violet



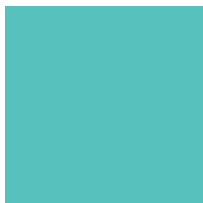
F-617-LG A  
F-617-SM A  
Blue-Green



F-618-LG A  
F-618-SM A  
Periwinkle



F-619-LG A  
F-619-SM A  
Royal Blue



F-620-LG A  
F-620-SM A  
Blue-Grey



F-621-LG A  
F-621-SM A  
Green



F-622-LG A  
F-622-SM A  
Chamois



F-624-LG A  
F-624-SM A  
Midnight Blue



F-625-LG A  
F-625-SM A  
Dark Green

**FLOAT FIRE 82® SHEET SIZE (current stock):** -LG Sheets approx. range 13" x 27" to 17-1/2" x 27"  
Thickness: 2mm  
-SM Sheets approx. range 13" x 13-1/2" to 13" x 15-1/2"

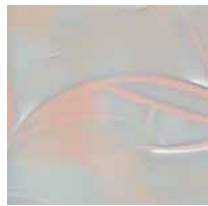
# FLOAT FIRE 82®

By Armstrong Glass Company

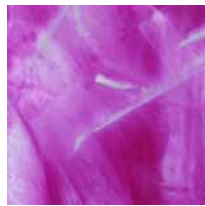
A fusible line of colored glass compatible with float glass



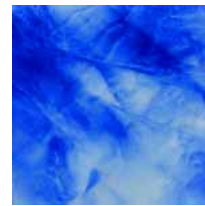
F-1000-LG A  
F-1000-SM A  
White



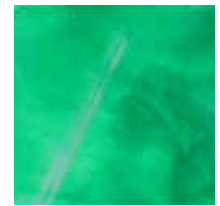
F-1001-LG A  
F-1001-SM A  
Champagne/White



F-1005-LG D  
F-1005-SM D  
Burgundy/White



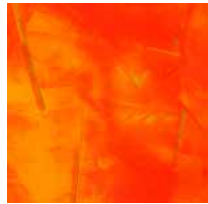
F-1007-LG D  
F-1007-SM D  
Cobalt Blue/White



F-1008-LG A  
F-1008-SM A  
Aqua/White



F-1010-LG D  
F-1010-SM D  
Green/White



F-1013-LG D  
F-1013-SM D  
Orange/Yellow



F-1017-LG D  
F-1017-SM D  
Flamingo/White



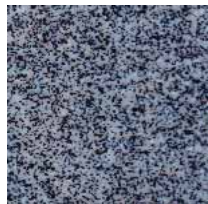
F-1018-LG A  
F-1018-SM A  
Light Blue/White



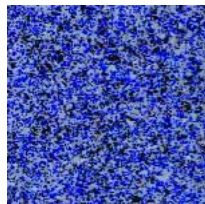
F-1021-LG D  
F-1021-SM D  
Pale Yellow/White



F-1020-LG A  
F-1020-SM A  
Black/White



F-1210-LG E  
F-1210-SM E  
Black Granite



F-1250-LG E  
F-1250-SM E  
Blue Granite



F-2002-LG B  
F-2002-SM B  
Caramel/White



F-2005-LG D  
F-2005-SM D  
Burgundy/White

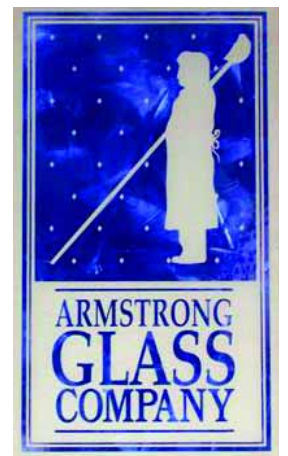


F-2006-LG D  
F-2006-SM D  
Red/White



F-2010-LG C  
F-2010-SM C  
Green/White

**IDEAL FOR  
SANDBLASTING**



Float Fire 82®

## FLOAT FIRE SWATCH PACK

Contains 16 pieces of assorted styles and colors approx. 6" x 8". Order as FF-SWATCH.

## FLOAT FIRE SAMPLE BOX

Cat. No. FF5B

## OTHER PRODUCTS

Compatible Float Glass  
Frit & Stringers and  
Tin Detector, see page A27.

## SUGGESTED

### FIRING

### TEMPERATURE

#### Tack Fuse/Slump:

1415-1450°F  
(768-788°C)

**Full Fuse:** 1525-  
1560°F (829-849°C)

**Anneal:** 1050°F