

## HAZARDOUS PACKAGING INFORMATION



Due to Federal Regulations regarding the transportation of hazardous materials (effective January 1991), common carriers have made it mandatory that products which are classified as "Hazardous" be packed to specification and be properly labeled as such.

Due to increased packaging and paperwork requirements by UPS (United Parcel Service), and other small package carriers (including FedEx), all hazardous materials are only available for truck shipment or will call (No air shipping.) **A \$5.00 packaging charge per box will be applied for truck shipping.**

**ORM-D labeled products are prohibited from air shipment and may only be shipped by UPS.** Even though ground service is offered by UPS to Hawaii, Puerto Rico, Alaska and Canada, ORMD items still can **NOT** go to these locations by this ground service.

Please inquire for more information about these items.

**TO BE SHIPPED ONLY BY TRUCK**

Cat. No.	Description	Qty. Limit/ Carton
5005	JAX Copper Darkener - 16 oz.	8
50051	JAX Copper Darkener - Gal.	4
5006	JAX Pewter Black - 16 oz.	8
50061	JAX Pewter Black - Gal.	4
5007	JAX Copper Plate - 16 oz.	8
50071	JAX Copper Plate - Gal.	4
50231	Novacan Superbrite - Gal.	4
50241	Novacan Black Patina - Gal.	4
50251	Novacan Patina Zinc	4
50281	Old Masters Flux - Gal.	4
50462	Glasflux	4
5301	Velvet Etch Cream - 1.5 lb.	12
53012	Etch Bath 16 oz.	24
53040	Etch Bath Kit	12

Adhesives.....	E6-E7
Cement .....	E5
Cleaners, Glass .....	E4
Contaminant Preventative .....	E4
Cutting Fluid, Coolant .....	E5
Etching Materials.....	E8-E9
Etching Kit .....	E8-E9
Film, Inkjet .....	E10
Flash Paper Pads .....	E4
Flux .....	E3
Flux & Patina Removers.....	E3
Glass Surface Protector.....	E4
Glue, Animal Hide .....	E5
Glue Chipping .....	E5
Hazardous Shipping Regulations .....	E1
Heavy Metal Soap .....	E4
Inflate 'A' Booth®.....	E9
Inkjet Film .....	E10
Light, Ultraviolet .....	E9
Masking Materials .....	E7, E10
Mirror Protector/Sealant.....	E4
Oxidation Preventative.....	E4
Patina Solutions.....	E2
Photobrasive® Systems .....	E10
Plating Solutions; Copper, Lead & Zinc .....	E2
Polishing Compounds, Glass & Metal .....	E4
Putty.....	E5
Removers: Flux, Stain & Patina.....	E3
Resist Materials, Masking & Cutting .....	E7, E10
Sand Etch® .....	E9
Silicone Sealant.....	E6
Soap, Abrasive.....	E4
Stain Remover .....	E3
Stencil Supplies .....	E7, E10-E12
Stencils .....	E11-E12, see our website
Surface Protector, Glass.....	E4
Tacky Wax.....	E6
Tape, Mask .....	E7
Tape, Stencil & Resist.....	E7
Tin Scope.....	E9
Toner, Zinc .....	E2
Ultra-Violet Light Source.....	E9
Wax, Tacky.....	E6
Whiting.....	E4

### OTHER CHEMICALS:

Fusing - See Section A

Lampworking - See Section B

Mosaics - See Section F

## NEW CHEMICALS



**GlassPro Cerium Oxide**  
Page E4



**Inland Diamond Coolant**  
Page E5



**Goop Adhesive**  
2 oz. size  
Page E6



5004

**JAX GREEN PATINA**

**Cat. No. 5004** - 16 fl. oz. (473ml)  
Carton Qty: 24

**Cat. No. 50041** - 1 gallon (3.8L)  
Carton Qty: 4

Produces a permanent, authentic, antique green finish on copper, brass and bronze.

**NOTE:** For a green finish over solder, a prior coating of Jax Copper Plating Solution (Cat. No. 5007) is necessary.



5005

**JAX BROWN DARKENER**

**\*Cat. No. 5005** - 16 fl. oz. (473ml)  
Carton Qty: 24 HAZMAT

**\*Cat. No. 50051** - 1 gallon (3.8L)  
Carton Qty: 4 HAZMAT

Produces an antique finish on brass, bronze and copper.



5006

**JAX PEWTER BLACK**

**\*Cat. No. 5006** - 16 fl. oz. (473ml)  
Carton Qty: 24 HAZMAT

**\*Cat. No. 50061** - 1 gallon (3.8L)  
Carton Qty: 4 HAZMAT

Produces a dark antique finish on pewter, lead, brass, copper, nickel, tin-lead alloys and solder.



5007

**JAX COPPER PLATING SOLUTION**

**\*Cat. No. 5007** - 16 fl. oz. (473ml)  
Carton Qty: 24 HAZMAT

**\*Cat. No. 50071** - 1 gallon (3.8L)  
Carton Qty: 4 HAZMAT

Instantly plates copper onto iron, steel, brass and solders. This product is a prerequisite for use of Jax Green Patina (Cat. No. 5004).

## NOVACAN SOLUTIONS



50230

**SUPERBRITE**

**Cat. No. 50230** - 8 fl. oz. (237ml)  
Carton Qty: 36 ORM-D

**\*Cat. No. 50231** - 1 gallon (3.8L)  
Carton Qty: 4 HAZMAT

An excellent copper patina for use with solder.



50240

**BLACK PATINA**

**Cat. No. 50240** - 8 fl. oz. (237ml)  
Carton Qty: 36 ORM-D

**\*Cat. No. 50241** - 1 gallon (3.8L)  
Carton Qty: 4 HAZMAT

Deep, rich black patina for lead and solder applications.



50250

**ZINC BLACK PATINA**

**Cat. No. 50250** - 8 fl. oz. (237ml)  
Carton Qty: 36 ORM-D

**\*Cat. No. 50251** - 1 gallon (3.8L)  
Carton Qty: 4 HAZMAT

Rich black patina developed especially for zinc applications.



50260

**LEAD PLATE**

**Cat. No. 50260** - 8 fl. oz. (237ml)  
Carton Qty: 36

For copper plating lead; apply to clean surface then gently wipe dry when desired color is achieved. (Use Novacan Superbrite on solder.)

**ZINC PLATE**

**Cat. No. 50270** - 8 fl. oz. (237ml)  
Carton Qty: 36

Apply the zinc plate solution on a clean surface with a firm brush. When bright, wipe dry. Use Novacan Superbrite on the solder joints. ORM-D

\*Requires HAZMAT special packaging & shipping fees for hazardous products. Due to federal regulations, all HAZMAT items are will call or are shipped via truck only. See page E1 for instructions.



5001

**GLASSPRO SOLDER FLUX**  
**Cat. No. 5001** - 4 fl. oz. (118ml)  
 Carton Qty: 36

**Cat. No. 5003** - 1 gallon (3.8L)  
 Carton Qty: 4 ORM-D

On the market for over 25 years and still the most popular flux. Activates copper foil and lead or zinc came for smooth soldering. Water soluble. Does not contain zinc chloride. Liquid form.



50102

**NOKORODE REGULAR PASTE FLUX**  
**Cat. No. 50101** - 1.7 oz. (50.3ml) can  
 Carton Qty: 48

**Cat. No. 50102** - 1 lb. (.45Kg) can  
 Carton Qty: 12  
 An industrial flux ideally suited for stained glass solder projects. Non-acid, lead-free. Contains zinc chloride.



5014

**LACO BRAND PASTE FLUX**  
**Cat. No. 5014** - 4 fl. oz. (118ml)  
 Carton Qty: 48

**Cat. No. 5015** - 1 lb. (.45Kg)  
 Carton Qty: 24  
 General soldering flux, water soluble. Does not contain zinc chloride. Non-acid, non-toxic, lead-free. Paste form.



5016

**LACO BRAND FLUX**  
**Cat. No. 5016** - 4 fl. oz. (118ml)  
 Carton Qty: 24

**Cat. No. 5017** - 32 fl. oz. (946ml)  
 Carton Qty: 12  
**Cat. No. 5018** - 1 gallon (3.8L)  
 Carton Qty: 4  
 General soldering flux, water soluble. Does not contain zinc chloride. Non-acid, non-toxic, lead-free. Liquid form.



50280

**NOVACAN OLD MASTERS FLUX**  
**Cat. No. 50280** - 8 fl. oz. (237ml)  
 Carton Qty: 36 ORM-D

**Cat. No. 50281** - 1 gallon (3.8L)  
 Carton Qty: 4 ORM-D  
 Developed for the stained glass industry. This liquid flux performs well.



50461



50462

**GLASFLUX**  
**Cat. No. 50461** - 4 fl. oz. (118ml)  
 Carton Qty: 24 ORM-D  
**\*Cat. No. 50462** - 1 gallon (3.8L)  
 Carton Qty: 4 HAZMAT  
 A single flux for copper foil, zinc and lead came. Flux will not corrode copper foil or discolor lead. Unique gel allows smooth, easy brush-on application and stays put. No unpleasant fumes.



50080

50081

**CLASSIC 100 GEL FLUX**  
**Cat. No. 50080** - 4 fl. oz. (118ml)  
 Carton Qty: 40  
**Cat. No. 50081** - 8 fl. oz. (237ml)  
 Carton Qty: 40  
 An odorless, smokeless flux. Cleans off with water and does not corrode after rinsing. Hinged cap for easy application.



50191

**SAFETY FLUX**  
**Cat. No. 50191** - 4 oz.  
**Cat. No. 50192** - 8 oz.  
 A revolutionary copper foil flux for the artist. Easy and safe to use. Washes off with soap and water up to 14 days after soldering. Non-irritating to the skin, no greasy mess, no zinc chloride, ammonium chloride or hydrochloric acid. No corrosive residue. Carton quantity 12.

## FLUX & PATINA REMOVERS



50290

**NOVACAN STAIN REMOVER**  
**Cat. No. 50290** - 8 fl. oz. (237ml)  
 Carton Qty: 36  
 Removes residual patina and flux stains on glass. ORM-D

### CJ'S FLUX & PATINA REMOVER

**Cat. No. 50410** - 8 fl. oz. (237ml)  
 Carton Qty: 12

**Cat. No. 50411** - 16 fl. oz. (473ml)  
 Carton Qty: 12

**Cat. No. 50412** - 1 gallon (3.8L)  
 Carton Qty: 4  
 Thoroughly removes residue from all types of flux. Prevents the oxidation crust from improper cleaning of lead and solder. Allows copper patina to work properly, creating a bright, shiny finish and makes clean-up quick and easy.



**KWIK-CLEAN FLUX & PATINA CLEANER**  
**Cat. No. 50420** - 16 fl. oz. (473ml)  
 Carton Qty: 12  
 Kwik-Clean does not require water to clean stained glass projects. Spray on and wipe off. Using Kwik-Clean after the patina eliminates "white mold" from forming on projects.



**FLUX & PATINA REMOVER**  
**Cat. No. 5097** - 8 fl. oz. (237ml)  
 Carton Qty: 12 ORM-D  
**Cat. No. 50971** - 16 fl. oz. (473ml)  
 Carton Qty: 12 ORM-D  
 Easy-to-use glass project cleaner. Apply to glass and wipe clean with damp sponge. Non-abrasive and water soluble. ORM-D

\*Requires HAZMAT special packaging & shipping fees for hazardous products. Due to federal regulations, all HAZMAT items are will call or are shipped via truck only. See page E1 for instructions.

## POLISHING COMPOUNDS



### SIMICHROME POLISH Cat. No. 50501

1.76 oz. (50g) tube  
The world's finest all-metal polish. This soft paste polish cleans to a brilliant shine, leaving a protective film which retards tarnishing.



### WHITING

**Cat. No. 5061** - 1.5 lbs. (.680Kg)  
**Cat. No. 5060** - 5 lbs. (2.27Kg)  
**Cat. No. 50615** - 50 lb. bag (22.7Kg)

A finely ground, naturally occurring Calcium Carbonate, 98% pure. Balance of components, silica or magnesium. As used in better grade glazing compounds or for cleanup after glazing.



### CLARITY STAINED GLASS FINISHING COMPOUND

**Cat. No. 5093**  
12 fl. oz. (355ml)  
Carton Qty: 48 ORM-D  
**Cat. No. 5093GAL**  
1 gallon (3.8L)  
Carton Qty: 4 ORM-D

Bright, even, durable finish on solder seams. Polishes and protects against tarnish. Cleans and waxes glass to a brilliant shine. Restores shine to most tarnished finishes. ORM-D



### SHEPHERD ABRASIVE SOAP

**Cat. No. 50491**  
16 fl. oz. (473ml)  
Carton Qty: 24  
Used to minimize contact exposure with most

heavy metals: lead, nickel, cadmium, cobalt, zinc, mercury, copper, silver, and chromium. An excellent solvent-free degreaser. Deeply embedded grease and oil rinse away from the heavy metals. May be used in hot or cold, hard or soft water. Rinses away with no greasy after-feel.



### FLASH PAPER PADS

**Cat. No. 50110**

Great for preparing metals for soldering and preparing zinc came for patina. Flash Papers clean brass, copper, zinc and other metals. To use, dampen a Flash Paper, rub on metal then wipe clean. Renewed luster will now accept solder like a sponge to water. 10 pads per package measuring 2-1/4" x 2-3/4".

### GLASSPRO CERIUM OXIDE NEW!

A high grade optical polishing compound used to lessen and polish scratches from mirror bevels, table top edges, sculptured glass, etc. Cerium Oxide is mixed with water to form a paste or slurry. This compound has excellent suspension qualities and will not harden. Contains no zinc oxide, and meets most local disposal ordinances. Use with Glass Polishing Kit (Cat. No. 27910) on page C9.



**Cat. No. 50620** - 1/2 lb. (227g)  
**Cat. No. 50621** - 1.5 lbs. (680g)  
**Cat. No. 50622** - 5 lbs. (2.26 Kg)



## GLASS SURFACE PROTECTOR



### THE INVISIBLE SHIELD

**Cat. No. 504571** - 16 fl. oz. (473ml);  
Carton Qty: 96  
**Cat. No. 504532** - 32 fl. oz. (946ml);  
Carton Qty: 12

Ultra-thin, optically clear and non-distorting polymer coating for glass or metals, which makes them water, soil and stain resistant. No cracking, peeling or discoloration.

Unaffected by sunlight, soaps, solvents or detergents. Easy wipe-on application. Buffs to a polished finish. Useful for frosted and sandblasted surfaces or for patina-treated metals. Avg. coverage is about 3000 sq. ft. per gallon. Effective in temps. ranging from -40°F to 400°F (-40°C to 204°C). ORM-D

## MIRROR PROTECTOR & SEALANT



### SILVER PROTECTOR

**Cat. No. 5065** - 4 fl. oz. (118ml) bottle

A coating for the exposed edge of mirror glass. Applied to the side and upper lip prior to copper foiling, it helps protect the silver surface while soldering. 36 per carton.



### MIRROR EDGE SEALANT

**Cat. No. 5216**  
13 oz. (368g) spray can  
Specially formulated clear coating protects mirror edges from blackening and reduces silver deterioration. ORM-D



## OXIDATION PREVENTATIVE



### OXY STOP

**Cat. No. 52121** - 16 fl. oz. (473ml)  
Carton Qty: 12  
**Cat. No. 52122** - 1 gallon (3.78l)  
Carton Qty: 4

Oxidation preventative for use on soldered lines or joints. Use directly from the bottle or mixed 50/50 with water. Can be used over solder or over a wax or patina finish. An organic, non-toxic, non-corrosive and non-caustic liquid.

**NOTE:** Organic wax should not be applied after Oxy Stop application.



### MAX PROFESSIONAL GLASS CLEANER

**Cat. No. 50980**

Leaves glass surfaces sparkling clean with a streak free, film free shine. Foaming action powers through the toughest grease and grime on any glass or hard surface. Protects and polishes in one easy step. Safe on tinted glass. ORM-D



### SPRAYWAY GLASS CLEANER

**Cat. No. 5096**  
19 oz. (539g)  
Spray and wipe clean, leaving no film. Pressurized can allows easy application. Does not contain ammonia. ORM-D

## GLASS CLEANERS

## GLUE CHIPPING



5205

### ANIMAL HIDE GLUE

**Cat. No. 5205** - 1 lb. (.454 Kg)

**Cat. No. 5206** - 10 lbs. (4.5Kg)

**Cat. No. 5207** - 2-50 lbs. (45Kg)

For "chipping" glass. For the "Do-It-Yourself" glue chip glass maker. It is the select grade of glue for this purpose. Gram strength varies from 108 to 135, with an average of 122.

### GLUE CHIPPING KIT

**Cat. No. 52075**

A professional Glue-Chipping kit to make beautiful patterns on bevels, stained glass, flashed glass, mirror plate glass, vases, glassware, bottles, and other round glass.

**Kit includes:** Application brushes, Chipping glue, Bullseye level, dessicant, XLG squeegee, 3 Genuine EtchMaster™ pre-cut etching stencils.



## STAINED GLASS PUTTY & CEMENT



52025

52022B

5202

### INLAND CEMENT SYSTEM

**Cat. No. Description**

**5202** 1 lb. Black (.45Kg)

**5203** 1 lb. Natural (.45Kg)

Carton Qty: 32

**52022B** 4 lbs. Black (1.8Kg)

**52022N** 4 lbs. Natural (1.8Kg)

Carton Qty: 9

**52025** 15 lbs. Black (6.8Kg)

**52035** 15 lbs. Natural (6.8Kg)

Carton Qty: 4

Suitable for packing glass into zinc or lead came. This cement hardens, strengthens and weather-proofs. ORM-D

### NO DAYS GLAZE™

A superior bonding and sealing solution designed for use with a wide range of metal came products including lead, brass, and zinc. See Cat. Page D1.



52010

### PRO'S PUTTY

**Cat. No. Description**

52012 1 lb. Natural (.454Kg)

52010 4 lbs. Natural (1.8Kg)

52011 16 lbs. Natural (7.26Kg)

520103 1 lb. Black (.454Kg)

520102 4 lbs. Black (1.8Kg)

520112 16 lbs. Black (7.26Kg)

### Volume equivalents:

**1 lb. = 1/2 pint, 4 lbs. = 1 quart,**

**16 lbs. = 1 gallon.**

Makes projects completely weather-proof without making windows too rigid. Hardens enough to strengthen a window, yet remains pliable enough inside the channel to make repairs without breaking the surrounding glass. Provides a natural antique patina on finished projects. Formulated to have an infinite shelf life if kept covered with water and tightly sealed. To use, pour off water. Putty can be thinned with mineral spirits.



520406

### GLASS PRO® PUTTY

**Cat. No. 520406**

1/2 pint black (.454Kg)

**Cat. No. 520407**

1 quart black (1.8Kg)

**Cat. No. 520408**

1 gallon blk (7.26Kg)

Glass Pro® Putty is a new outstanding fast-setting black colored stained glass cement designed for strengthening and waterproofing leaded glass panels. It is better than regular putty and more economical than competitive cements. Also, it cleans up easily with whiting. It's a ready to use oil-based elastic compound that is easily applied. It adheres tenaciously to came and glass, expands and contracts with weather, and forms a tough surface coating while remaining permanently elastic. Apply at temperatures above 40°F (4.5°C).

This product may contain Crystalline Silica known to the State of California to cause cancer.

## CUTTING FLUID & COOLANTS



5020



50330



50502



50340



50255



50463



50205



28827

### LOW ODOR CUTTING FLUID

**Cat. No. 5020** - 4 fl. oz.

(118ml)

Carton Qty: 36

A selective petroleum distillate. Viscosity suited to facilitate glass cutting. Extends glass cutter life. ORM-D

### NOVACAN CUTTER OIL

**Cat. No. 50330**

8 fl. oz. (237ml) bottle

### "ENVIRO GOLD" CUTTING FLUID

**Cat. No. 50502** - 4 fl. oz. (118ml)

Carton Qty: 12

Developed to complement the Fletcher Terry "Gold-Tip" Designer II Oil Cutter line. Provides optimum cutting performance and extends the life of cutting tools. Environmentally safe and 100% biodegradable, eliminating disposal and clean-up problems.

### NOVACAN GRINDER COOLANT

**Cat. No. 50340**

8 fl. oz. (237ml) bottle

Carton Qty: 36

### EZ-GRIND

**Cat. No. 50255** - 8 fl. oz. (237ml)

Carton Qty: 24

Advanced formula lubricant for extended diamond life. Easier glass particle clean-up and faster cutting. EZ-Grind is water soluble and environmentally safe.

### GLASTAR CUTTING FLUID

**Cat. No. 50463**

10cc dispenser tube permits filling self-oiling cutters directly from tube to cutter. No transfer from source to syringe to cutter.

### BEETLE JUICE CUTTING FLUID

**Cat. No. 50205**

2 fl. oz. (59ml) with applicator cap.

A selective petroleum distillate.

Viscosity suited to facilitate glass cutting. Extends glass cutter life. ORM-D

### INLAND DIAMOND COOLANT

**Cat. No. 28827**

8 oz. bottle. Increases the life of your grinder bits! High lubricity, water soluble solution. Easy to add to the water reservoir of grinders, table saws or band saws. Increases bit life by reducing friction. Makes grinding and sawing faster and easier.





52071

### LOCTITE COMBINATION ADHESIVES

#### 365 ADHESIVE

Cat. No. 52071 - 1.69 fl. oz. (50ml)

#### 7075 ACTIVATOR

Cat. No. 52072 - 4.5 oz. (128g) can  
A dual cured (both UV and/or activator cured) material for bonding colored or clear glass. Use UV bonding for clear glass and adhesive and activator bonding for colored glass. Medium viscosity. Adheres in 5-30 seconds. Fully cures in 24 hrs.



52072



52270

### LOCTITE 349 IMPRUV UV ADHESIVE

Cat. No. 52270 - 1.69 fl. oz. (50ml)

Cat. No. 52271 - 1 liter bottle (Special order only.)

Thicker adhesive for bonding and sealing transparent glass-to-glass or glass-to-metal when exposed to UV radiation. Use for gaps and vertical assemblies. Cure time is determined by UV source. A single component modified Methacrylate Ester clear liquid. One year shelf life. Weather and heat resistant. Squeeze applicator bottle.



52272

### LOCTITE IMPRUV 363 UV ADHESIVE

Cat. No. 52272 - 1.69 fl. oz. (50ml)

Glass-to-glass transparent sealant that is activated by ultra-violet exposure. Low viscosity makes it simple to join larger glass pieces without excessive pressure. Adheres in 5-30 seconds. One year shelf life. Convenient squeeze applicator bottle.

See Page E9 for UV light source.



5221

### LOCTITE ADHESIVE

Cat. No. 5221 - 10.5 oz. (298g)  
All purpose adhesive dries clear and has superior bonding strength. Produces a permanent or temporary bond. Ideal for imparting a dry tacky surface on stencils, patterns, lampshade cartoons, etc. ORM-D



52090

### TRIOLYSE ADHESIVE

Cat. No. 52090

A powerful multi-purpose, two-part easy to use adhesive. Applies as thin as water and makes an unbreakable bond that will hold metal to glass and glass to glass. Triolyse is curable with an activator liquid or ultraviolet light or even in sunlight. When dry, glue is virtually invisible and non-yellowing. Includes 14 ml of activator and 10 ml of adhesive.



5219

### ADHESIVE E-6000 - Clear

Cat. No. 5219 - 3.7 fl. oz. (111ml)  
Flexible, viscous styrene-based adhesive ideally suited for attaching glass and jewelry to metal findings, glass-to-glass and other applications. Adheres in 5 to 10 minutes and hardens to a clear waterproof cure in 24 hours. ORM-D



52192

### New size! GOOP ADHESIVE

Cat. No. 52192 - 2 fl. oz. (59 ml)  
Stronger than glue, this clear adhesive and sealant bonds wood, plastic, glass, stone, fabric and many other surfaces. Waterproof and washer and dryer safe. An excellent adhesive. A screw-on nozzle applicator is included. ORM-D



52302

### WELDBOND ADHESIVE

Cat. No. 52302 - 9.29 oz. (275ml)

Cat. No. 52303 - 5 oz. (148ml)

A universal adhesive. Glues tile, wood and more. Seals all porous surfaces. An excellent bonding agent for concrete, garden stones, etc. Dries clear. Non-toxic, no fumes.

For interior or exterior.



52401

### SAFE2BOND ADHESIVE

Cat. No. 52401 - .68 oz. (20ml)

An optically clear adhesive that cures fast in "white" light. No need for an ultra violet light source. Cures at 470nm, the safe end of the spectrum. SAFE2BOND cures clear glass bond in fluorescent light in 30 to 90 seconds (with natural light in 90 seconds). Compressive shear strength: (N/mm<sup>2</sup>) 6.4/mm<sup>2</sup> (908.8 Psi). Glass to glass only.



52151

### LOCTITE SUPERFLEX SILICONE SEALANT

Cat. No. 52151 - 3 oz. (89ml) tube

All-purpose sealant. Flexible, waterproof, weatherproof, will not crack or shrink. Sealant makes excellent invisible box hinge that lasts a lifetime.



### DUCO CEMENT

Cat. No. 52501

This household cement can be used for glass, china, wood, metal, leather and paper. It dries hard and clear. Tube has dispensing tip that prevents clogging or drying out and provides more accuracy. 1 oz. (30ml) tube.

78261



### TACKY WAX

Cat. No. 7826 - 16 oz. (453g) pkg.

Cat. No. 78261 - 8 oz. (227g) pkg.  
Specially formulated, non-drying wax adheres glass to glass or almost anything else. Used to prop up glass on a mold to ensure accurate fitting. Also compensates for large pieces or uneven glass thicknesses, and for color composing on glass easels.

### E-Z TACKY WAX

Cat. No. 5298

6 oz. (177ml) container with wooden applicator. Convenient jar of white tacky wax. Works well for holding mosaic glass pieces in place over a pattern prior to application of contact paper. Also can be used for lamps, panels, etc.



## LOCTITE DURABOND 530CL EPOXY ADHESIVE

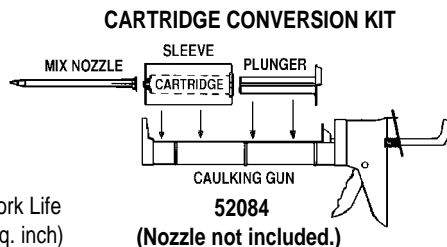
- Cat. No. 52082 - 1.69 fl. oz. (50ml) Epoxy Cartridge
- Cat. No. 52083 - Manual Dispenser
- Cat. No. 52084 - Cartridge Conversion Kit
- Cat. No. 52085 - Mixing Nozzles (Pkg. of 10)

### FEATURES:

- ❖ Ultra Clear
- ❖ Impact Resistant
- ❖ 30-minute Work Life
- ❖ 2000 - 4000 psi Shear Strength (psi = pound per sq. inch)

An excellent adhesive for bonding glass to glass or other suitable substrates. Great for colored glass which does not pass enough ultra-violet light for UV bonding adhesives. Conveniently packaged in a **2-part cartridge** (Cat. No. 52082) which mixes as it dispenses through a single nozzle applicator.

For application, the cartridge can be used with the pistol-grip **Manual Dispenser** (Cat. No. 52083) or with the **Cartridge Conversion Kit** (Cat. No. 52084) which uses a "handy-man" caulking gun (not included). **Mixing nozzles** are available in packages of 10 (Cat. No. 52085).



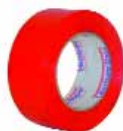
(Nozzles not included. Order separately—  
Cat. No. 52085.)



### DEVCON 2 TON EPOXY

Cat. No. 52502

Popular with glass jewelry makers. Secures bails and other findings to glass. Abrade glass surface for best bond. Evenly dispenses dual cartridges for mixing. 30 minute working time. 2 hour handling time. Waterproof. 2500 lbs. (1134 kg) psi strength.



### VENTRUE GLASS MASK TAPE

Cat. No. 27330 - 2" (51mm) x 55 yd. roll

Cat. No. 27331 - 1" (25mm) x 55 yd. roll

This is a strong, conformable red polyethylene hand-tearable film with a high tack and removable acrylic non-curing adhesive system. It has excellent ultra violet resistance and resistance to moisture, acids, chemicals, alkalis, oils, abrasion and weathering.

More sandblasting supplies can be found on E8-E9 and C34.

### RESIST TAPE

Cat. No. 2730\_\_\_\_.004" (10mm); Cat. No. 2735\_\_\_\_.008" (20mm)

Strong, thin vinyl film with acrylic adhesive on release liner. Resists creep, releases clean after blasting. Accepts pen, pencil, marker or carbon. Cuts clean. See chart below for specifications.

### HEAVY DUTY RESIST TAPE

Cat. No. 2736\_\_\_\_ - Gray

Recommended for deep blasting. Thin for easy cutting [.015" (.38mm)]. Gray rubber vinyl in 10 yd. (9.14m) roll. Peels from white release paper without residue. Use white pen or pencil to draw image on gray resist. See chart below for specifications.

### MASKING MATERIALS SHEETS

For Acid Etching: Cat. No. 27300101 (.004" - .10mm)

For Sandblasting: Cat. No. 27300100 (.004" - .10mm)

Cat. No. 27350100 (.008" - .20mm)

For sandblasting and etching. 12" x 12" sheets—same as Resist Tape 470 (Cat. No. 2736). Each standard package contains one sheet.



### RESIST TAPE SPECIFICATIONS

Cat. No.	Description	Color	Dimensions		Roll Length	
			Standard	Metric	Std.	Metric
2730-C6	Resist Tape	Clear	6 x .004"	152 x .10mm	60'	18.2m
2730-C12	Resist Tape	Clear	12 x .004"	305 x .10mm	60'	18.2m
2730-C18	Resist Tape	Clear	18 x .004"	457 x .10mm	60'	18.2m
2730-C24	Resist Tape	Clear	24 x .004"	610 x .10mm	60'	18.2m
2735-C12	Resist Tape	Clear	12 x .008"	305 x .20mm	60'	18.5m
2735-C18	Resist Tape	Clear	18 x .008"	457 x .20mm	60'	18.5m
2735-C24	Resist Tape	Clear	24 x .008"	610 x .20mm	60'	18.5m
2730-W6	Resist Tape	White	6 x .004"	152 x .10mm	60'	18.2m
2730-W12	Resist Tape	White	12 x .004"	305 x .10mm	60'	18.2m
2730-W18	Resist Tape	White	18 x .004"	457 x .10mm	60'	18.2m
2730-W24	Resist Tape	White	24 x .004"	610 x .10mm	60'	18.2m
2735-W12	Resist Tape	White	12 x .008"	305 x .20mm	60'	18.5m
2735-W18	Resist Tape	White	18 x .008"	457 x .20mm	60'	18.5m
2735-W24	Resist Tape	White	24 x .008"	610 x .20mm	60'	18.5m
2736-12	Heavy Duty Resist Tape	Grey	12 x .015"	305 x .38mm	30'	9.14m
2736-18	Heavy Duty Resist Tape	Grey	18 x .015"	457 x .38mm	30'	9.14m
2736-24	Heavy Duty Resist Tape	Grey	24 x .015"	610 x .38mm	30'	9.14m

For additional resist material, see page E8 & E10.

More sandblasting supplies can be found on E8-E9 and C39.



53003

**ETCHING FROST**  
**Cat. No. 53003** - 2.5 fl. oz. (89ml)  
**Cat. No. 53004** - 10 oz. (355ml)  
 Armour Etch. A thick, creamy paste which imparts a frosted finish when applied to glass. Excellent results with stencil masks. Not suitable for Pyrex or other shatterproof glass. ORM-D

**\*VELVET ETCHING CREAM**  
**Cat. No. 5301** - 1.5 lb. (680g) bottle  
 A thick, creamy paste which is applied by brush or squeegee. Glass may also be dipped into the paste. Imparts a soft frosted finish to glass. Not suitable for hard glass (Pyrex) decals. HAZMAT



5301

**B & B DIP 'N ETCH**  
**Cat. No. 50663** - 4 oz. (118ml)  
**Cat. No. 50664** - 16 oz. (473ml)  
**Cat. No. 50665** - 32 oz. (946ml)  
 Etching solution that does not contain hydrofluoric or sulfuric acid. A reusable liquid solution of ammonium bifluoride in water which can be used to etch stemware, Christmas ornaments, light bulbs, and beads. It can also be used to etch slumped and sandblasted surfaces. Produces a smooth matte finish without an unpleasant odor. Etching time is 15-30 minutes. Not suitable for Pyrex or other borosilicate glasses. ORM-D



50663



50661

**B & B ETCHING CREME**  
**Cat. No. 50661** - 4 oz. (118ml)  
**Cat. No. 50662** - 32 oz. (946ml)  
 A thick, creamy texture that when applied to glass or mirror, etches the surface leaving a smooth white finish. Gives a permanent etch and can be reused. Apply with a squeegee. Etching time is 10-15 minutes. After etching, the surface can be left plain or decorated with paint and/or decals. ORM-D



**ARMOUR ETCH™ GLASS ETCH KIT**  
**Cat. No. 5303**  
 Includes etch cream, glass cleaner, hobby knife, brush, gloves, stencils, 45 tracing patterns and an instruction booklet. ORM-D

See pages E11-E12 and see our website for stencils.



**\*ETCH BATH® KIT**  
**Cat. No. 53040**  
 When you are looking for a method to create an overall etched surface for a favorite glass jar or bottle, or even a way to add depth and dimension to your glass beads, Etch Bath® is the solution. Just dip your project into Etch Bath® and it will go to work producing a soft, etched surface. The kit contains a 16 oz. bottle of Etch Bath® Solution, over 25 Peel 'N' Etch stencils, two hanging glass ornaments, rubber gloves, dipping container and instruction booklet. ORMD



**\*ETCH BATH®**  
**Cat. No. 53012** - 16 fl. oz. (473 ml)  
 Glass dipping solution. The quick and easy method to achieve an overall etched matte finish. Use to decorate household jars, bottles and canisters. Even glass beads can quickly take on a soft overall frosted appearance in 5 to 15 minutes. ORMD



**B & B DESIGNER TIP KIT**  
**Cat. No. 50666**  
 Draw, design and etch! Use designer tips to etch glass easily by writing, drawing or tracing to create your own unique treasure. Each designer tip provides a different line weight (thickness) so designs can be intricate or simple, delicate or bold. The kit comes with everything needed to etch glass (except the glass itself). Includes 2 fl. oz. etching cream, dispenser bottle, dispensing cap, three metal design tips, three plastic design tips, project ideas and instructions.

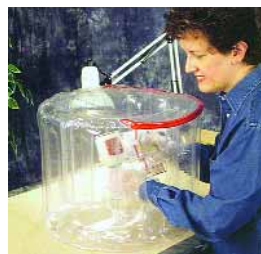
\*Requires HAZMAT special packaging & shipping fees for hazardous products. Due to federal regulations, all HAZMAT items are will call or are shipped via truck only. See page E1 for instructions.



### SAND ETCH® KIT

**Cat. No. 50670**

The Sand Etch® Glass Etching System is an exciting new creative tool designed to etch beautiful, permanent designs that personalize and decorate glassware and mirrors. It is easy to use and features a small compact design for a comfortable grip. The Sand Etch® Kit includes a Sand Etch Sandblaster, 6 oz. bottle of Aerosol Propellant, 8 oz. bottle of Abrasive Grit, an Instructional Booklet, and a 1-1/2" x 1-1/2" Reusable Stencil. ORM-D



### INFLATE 'A' BOOTH®

**Cat. No. 50675**

Designed exclusively for use with the Sand Etch® Glass Etching System. Inflate 'A' Booth® is the quick and easy way to keep your work area clean and neat while letting you easily recycle your Sand Etch® abrasive grit. Made from a clear durable vinyl, this compact lightweight booth offers a completely visible work area so you can clearly view your project during the sand etching process. Outside dimensions: 17" x 14" (432 x 3565mm).



### SAND ETCH® BOOK

**Cat. No. 66091**

Picone & St. James. Creative, Portable Glass Etching Techniques. Shows examples, techniques, hints and design concepts to inspire and give a further knowledge of what is required to create beautiful, permanent etched designs. Learn to personalize and decorate household glassware, windows and mirrors with Sand Etch®. 34 color pages.



### TIN SCOPE TIN DETECTOR

**Cat. No. 52180**

A battery powered detector to determine which is the tin side of a sheet of Float Glass. Simply place the Short Wave UV window against the glass. The tin side will be foggy, the reverse side will be clear. Weighs only 7.5 oz. (340g) and measures 6-1/2" long x 1-3/4" wide (165 x 45mm). Carry cord is attached. Powered by 4 AA batteries (not supplied).

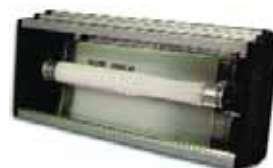
*For Float Fire 82® Glass, See Page K146-K147.*



### SAND ETCH® NOZZLE

**Cat. No. 50673**

Replacement for the nozzle in the Sand Etch® Kit. Metal lined for long use. Pack of 5.



### SUN-SETTER ULTRA-VIOLET LIGHT SOURCE

**Cat. No. 5214**

6.5" (165mm) long x 3" (76mm) wide. Self-contained hand-held ultra-violet light source. Emits long wave light (320-400 nano-meters) needed for UV adhesive curing. Tacks in 6-10 seconds. Cures in 30-60 seconds. 115 volts, 20 amps, 60Hz, 3-prong safety plug. Life expectancy of bulb is 4,000-6,000 hrs.

**Cat. No. 5214RB** - Replacement long wave bulb

**Cat. No. 5214SW** - Short wave UV bulb only. Wave length 220-280 nano-meters. Fits in Cat. No. 5214 light source. Used to determine "tin side" of float glass.

See page E7 for Resist Material for sand etching and sandblasting.



### SAND ETCH® PROPELLANT

**Cat. No. 50672**

For use with the Sand Etch® Glass Etching System. Non-flammable and Non-ozone depleting. 6 oz. ORM-D



### SAND ETCH® ABRASIVE

**Cat. No. 50674**

12 oz. bottle of reusable abrasive grit for the Sand Etch® Glass Etching System. Non-flammable and non-ozone depleting. ORM-D

# PhotoBrasive® SYSTEMS

PhotoBrasive® Systems offers a comprehensive product line designed to accommodate every job, every condition, every substrate and every challenge faced by those working in the sandcarving industry today.



©PhotoBrasive Systems Duluth, MN.

## EQUIPMENT & SUPPLIES

### ACCUART INKJET FILM

AccuArt™ Inkjet Film is a revolutionary completely waterproof inkjet film that allows the creation of film positives and negatives using a computer and a standard inkjet printer (not for use with laser printers). A special coating turns regular water-based ink into a water-resistant film, enabling the creation of positives with the stability to withstand the wet and humid conditions of the washout area. Use to create line art and halftone positives/negatives. (See chart below.)

Cat. No.	Description	Sheet Size	# of Sheets
27306	ACCUART INKJET FILM	8.5" x 11"	10
273061	ACCUART INKJET FILM	8.5" x 11"	100

### RAPIDMASK™

Cat. No.	Description	Size	# in Box
273801	RapidMask 2 mil	10" x 12"	10
273802	RapidMask 2 mil	10" x 12"	25
273803	RapidMask 4 mil	10" x 12"	10
273804	RapidMask 4 mil	10" x 12"	25



**EXPOSE-APPLY-BLAST.** The only photo resist film on the market today that requires absolutely no water development. This innovative photo resist film offers extreme resolution and a vivid printout image that provides an effortless sandcarving experience. It is self-adhesive with effortless slip and carrier sheet removal. Fine halftone

making ability. Use RapidMask HD 2 mil for high detail halftones. RapidMask Version II, 4 mil with strong blast resistance allows deeper etching.

### LETRALITE EXPOSURE UNIT

**Cat. No. 27370**

Provides intimate contact of a positive or negative original film to the photo resist film. Built-in light source with timer control.

**Image Area:** 11" x 14" (279 x 355mm)

**Overall Size:** 18" x 3" x 7" (457 x 76 x 178mm)

**118 volts / 60 Hz / 0.70 amps**



### TRIGGER JET NOZZLE

**Cat. No. 27371**

For flushing out the unexposed portion of a stencil after printing. Connector fits standard male hose fitting.

### FILM DRYER

**Cat. No. 27372**

The filter flow air dryer is designed to accommodate ImagePro® Super Advanced Photo Resist

Film. Fresh filtered air comes into the dryer through the perforated holes on the bottom of the unit, accommodating up to four 10" x 12", (254 x 305mm) or eight 8" x 10" (203 x 254mm) sheets or any combination of smaller sized sheets at one time. The thermostatic control has been preset for optimal results.

**115 volts / 60 Hz / 850 watts**



### APPLICATION ADHESIVE QUART

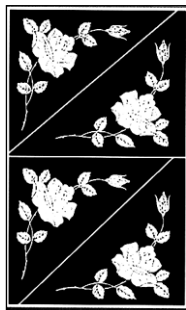
**Cat. No. 27305**

For applying masks on difficult-to-stick-to surfaces or substrates that require aggressive sandcarving.

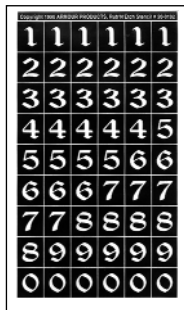


## RUB 'N ETCH STENCILS

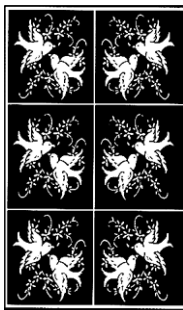
5" x 8" (127 x 203mm) Sheet packaged with burnisher and instructions. Illustrations shown with description and catalog numbers below. White image is the etch detail.



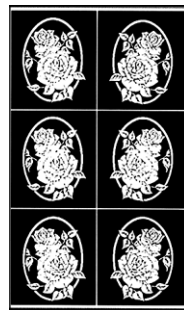
**5305-0174**  
Corners 4



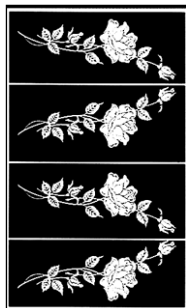
**5305-0192**  
Old English Numbers



**5305-0266**  
Love Birds 2



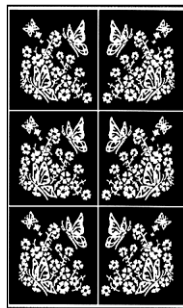
**5305-0302**  
Rose Oval



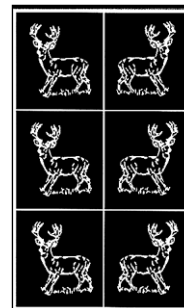
**5305-0303**  
Stemmed Rose



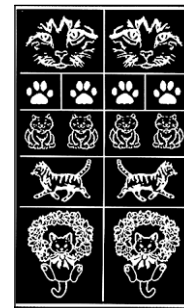
**5305-0323**  
Hummingbirds 2



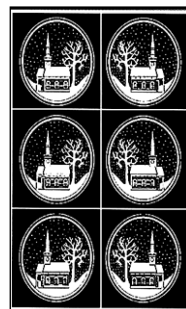
**5305-0324**  
Butterflies



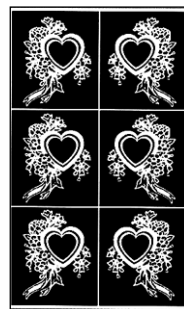
**5305-0354**  
Buck



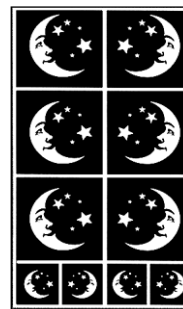
**5305-0370**  
Cats



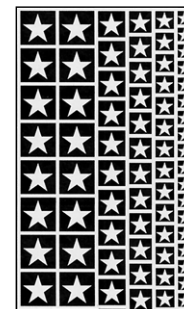
**5305-0380**  
Country Church



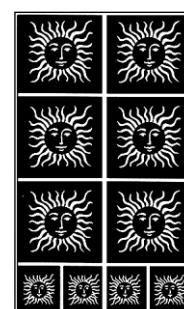
**5305-0386**  
Hearts & Flowers



**5305-0401**  
Moon-N-Stars



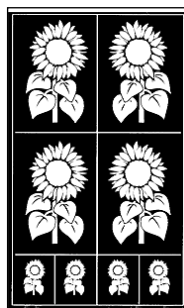
**5305-0402**  
Stars



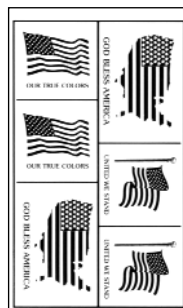
**5305-0408**  
Old Sol



**5305-0432**  
Leaves



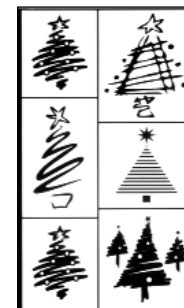
**5305-0433**  
Sunflower



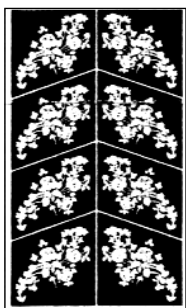
**5305-0436**  
Flags



**5305-0443**  
Butterflies



**5305-0446**  
Christmas Trees



**5305-0447**  
Flower Bouquets



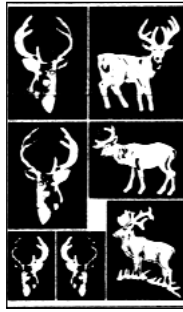
**5305-0457**  
Salutations

**RUB 'N ETCH STENCILS**

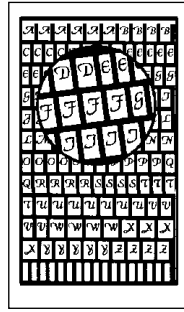
5" x 8" (127 x 203mm)  
Sheet packaged with burnisher and instructions. Illustrations shown with description and catalog numbers below. White image is the etch detail.



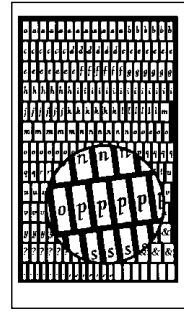
5305-0459  
Horses



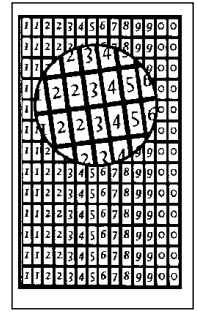
5305-0461  
Stags



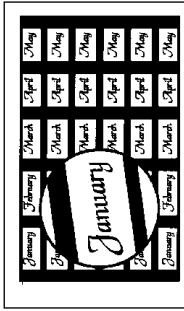
5305-0550  
Upper Case Alphabet



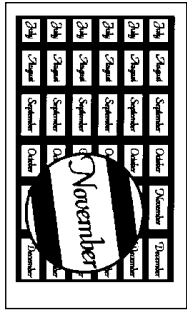
5305-0551  
Lower Case Alphabet



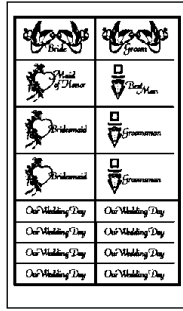
5305-0552  
Numbers 0-9



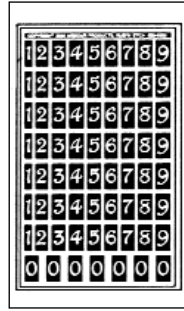
5305-0555  
Months: January - June



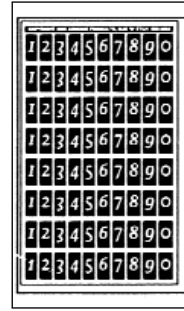
5305-0556  
Months: July - December



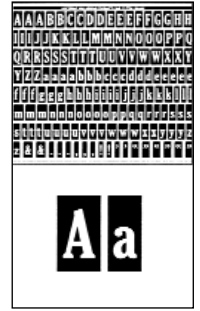
5305-0563  
Wedding Assorted



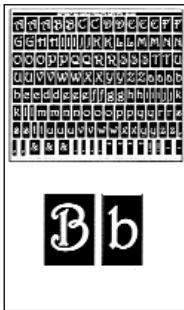
5305-0602  
Numerals



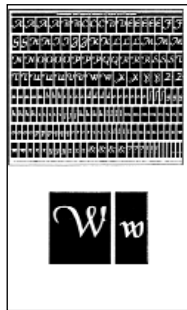
5305-0603  
Numerals



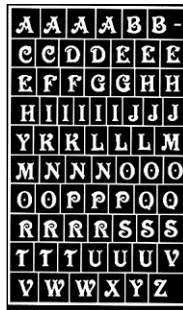
5305-9601  
Alphabet



5305-9602  
Alphabet



5305-9603  
Alphabet



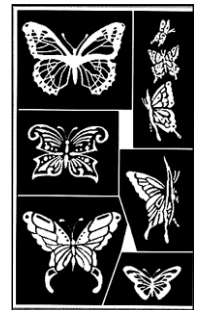
5305-AL221  
Alphabet



5305-AL222  
Alphabet



5305-AL223  
Alphabet



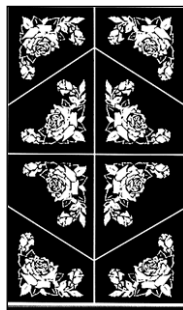
5305-BF151  
Butterfly



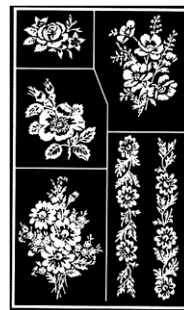
5305-BR262  
Love Birds



5305-BR264  
Ducks



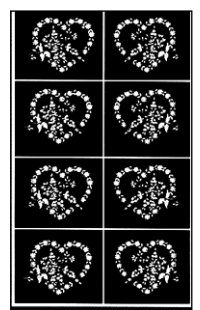
5305-CO173  
Corners



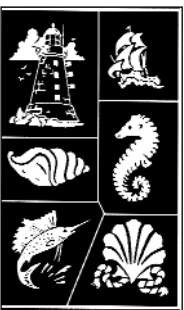
5305-FL138  
Floral



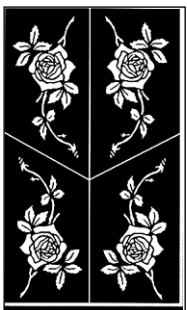
5305-FR321  
Fliers



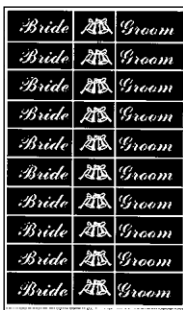
5305-HR342  
Hearts



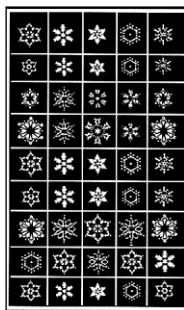
5305-NT182  
Nautical



5305-RS301  
Roses



5305-WD253  
Wedding

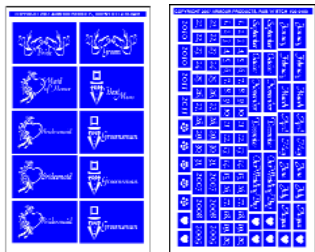


5305-XM115  
Snowflakes

## RUB 'N ETCH STENCILS NEW

Each pack contains three themed glass etching stencil sheets that can be used individually or in combination, offering more creative solutions for glass etching and mirror decorating. 4-3/4" x 8" (121 x 203mm) sheets.

2 sheets



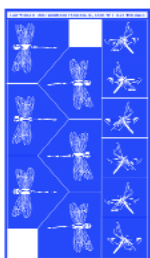
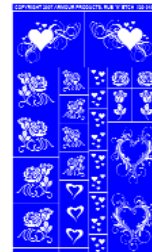
**5308-7010**  
Wedding Moments



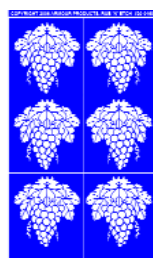
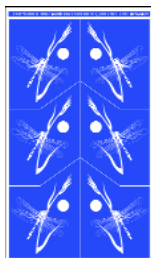
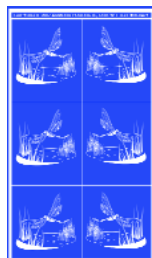
**5308-7012**  
Fern Designs  
(3 sheets)



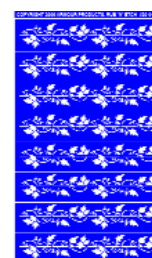
**5308-7014**  
Romantic Moments



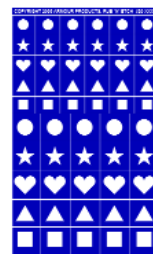
**5308-7016**  
Dragonfly Designs



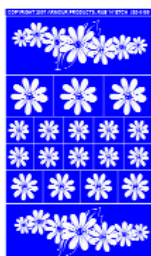
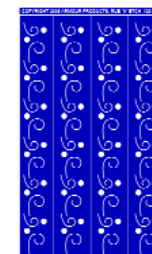
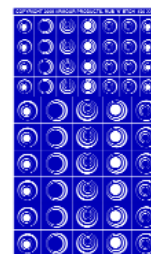
**5308-7018**  
Grape Designs



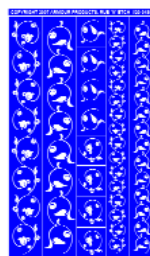
**5308-7020**  
Seasons Greetings



**5308-7022**  
Design Elements



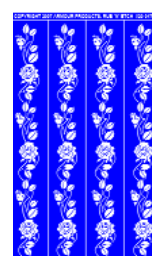
**5308-7024**  
Floral Designs



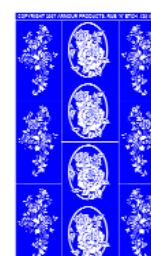
**5308-7026**  
Old English Letters &  
Numbers  
(3 sheets)



**5308-7032**  
Script Letters &  
Numbers  
(3 sheets)



**5308-7042**  
Rose Designs

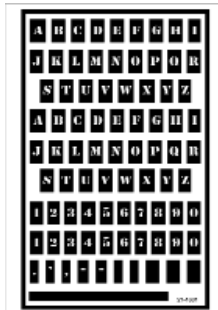


**REUSABLE OVER 'N' OVER STENCILS**

Easy to use, reusable stencils. Flexible, multi-use stencils easily adhere to various shaped objects. This enables you to etch, Sand Etch, or paint (waterbased) on glass, mirror, ceramics and other non-porous surfaces to create beautiful designs. 5" x 8" (127 x 203mm) sheets.



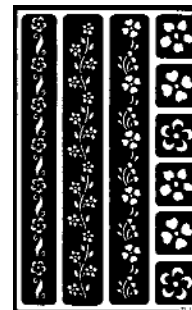
5308-1600  
Blank



5308-1601  
Alphabet



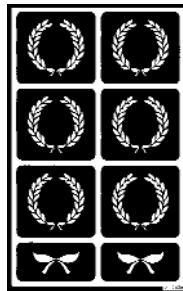
5308-1602  
Floral Hearts



5308-1604  
Floral Borders



5308-1605  
Butterfly



5308-1606  
Crests



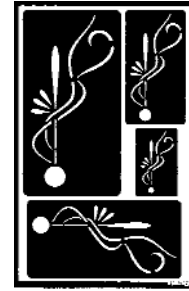
5308-1607  
Alphabet/Numbers



5308-1608  
Alphabet - Lower Case



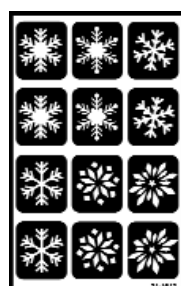
5308-1609  
Stylized Floral



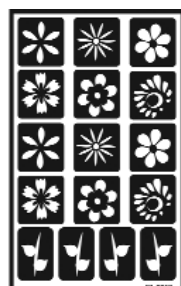
5308-1610  
Flourish



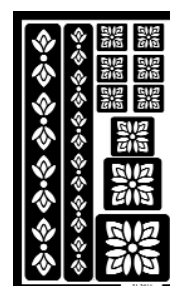
5308-1611  
Christmas



5308-1612  
Snowflakes



5308-1613  
Stylized Floral



5308-1614  
Border-Corner



5308-1615  
Border-Corner